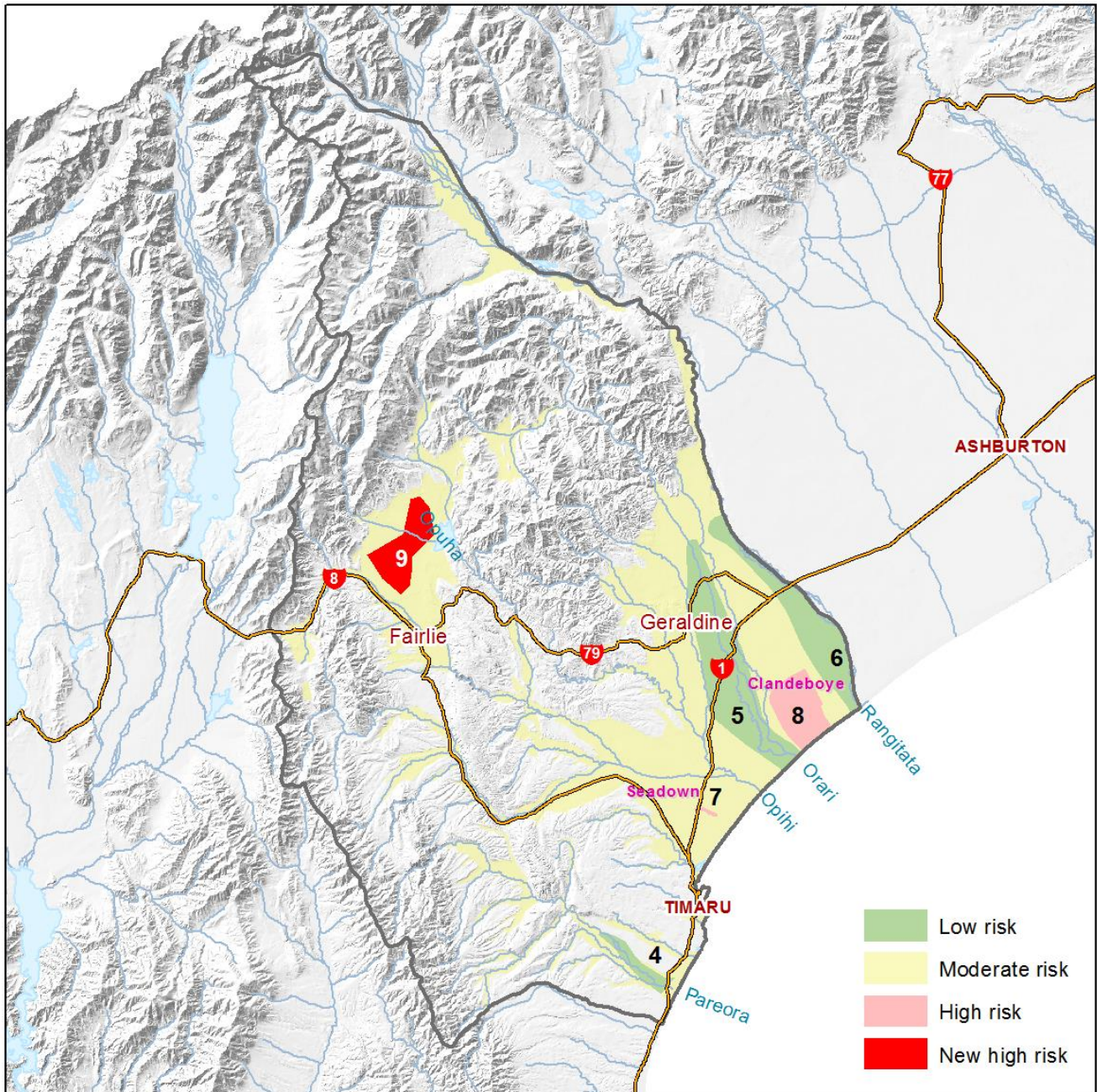


Risk of nitrate in drinking water from private wells in the Orari-Temuka-Opihi-Pareora zone



Low-risk - areas where nitrate concentrations in groundwater are always below the MAV

Moderate-risk - areas where we do not know if nitrate concentrations will be above or below the MAV

High-risk - areas where nitrate concentrations in shallow groundwater are above the MAV most or all of the time

A report "Risk maps of nitrate in Canterbury groundwater" explains this map in more detail and can be found on the Environment Canterbury website (www.ecan.govt.nz)

For further information on nitrate in drinking-water, health risks, how to get your wells tested and further actions you can take, please see information provided by Community and Public Health (www.cph.co.nz)

Map last reviewed December 2017