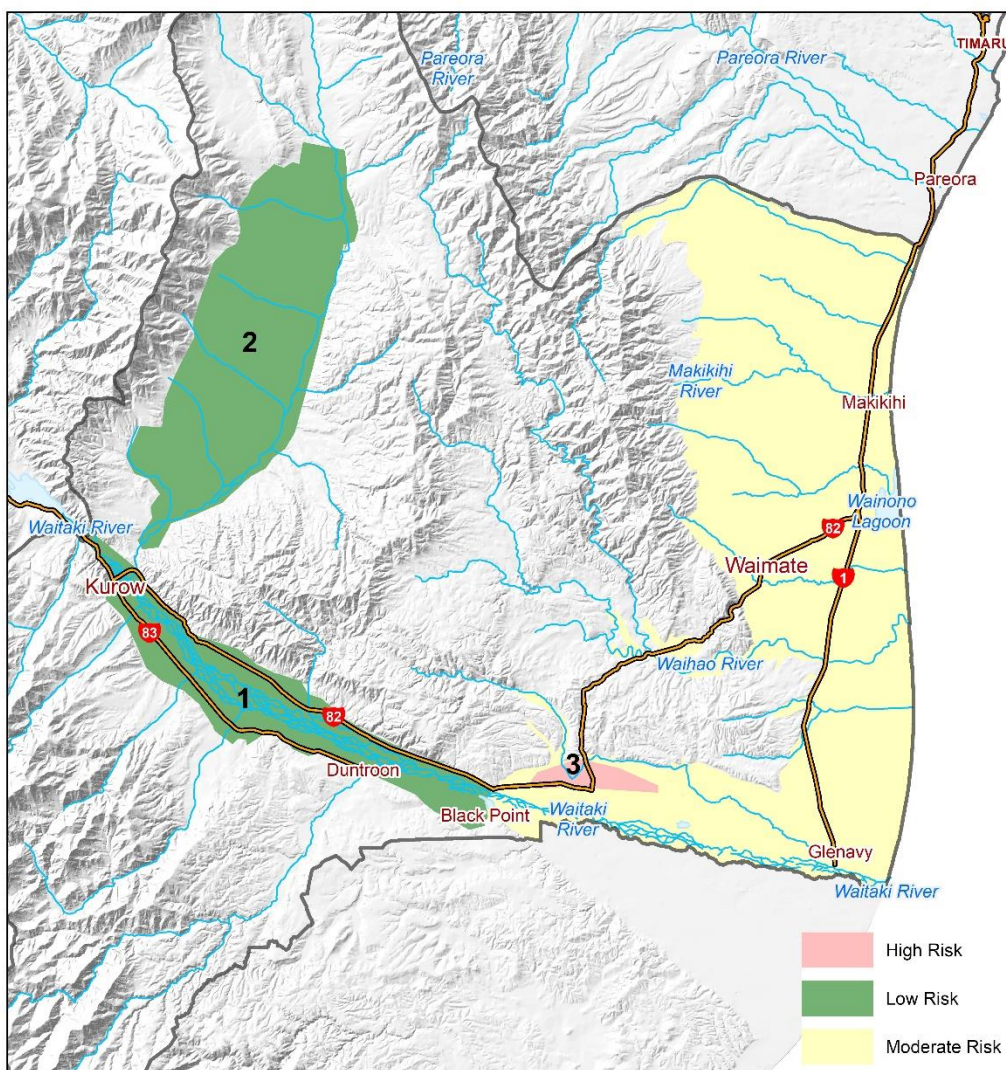


Risk of nitrate in drinking water from private wells in the Lower Waitaki – South Coastal Canterbury zone



Low-risk	- areas where nitrate concentrations in groundwater are always below the Maximum Acceptable Value (MAV)
Moderate-risk	- areas where nitrate concentrations could be above or below the MAV or we are unsure of the current concentrations
High-risk	- areas where nitrate concentrations in shallow groundwater are above the MAV most or all of the time

A report “Risk maps of nitrate in Canterbury groundwater” explains this map in more detail and can be found on the Environment Canterbury website (www.ecan.govt.nz)

For further information on nitrate in drinking-water, health risks, how to get your wells tested and further actions you can take, please see information provided by Community and Public Health (www.cph.co.nz)



Map last reviewed March 2020