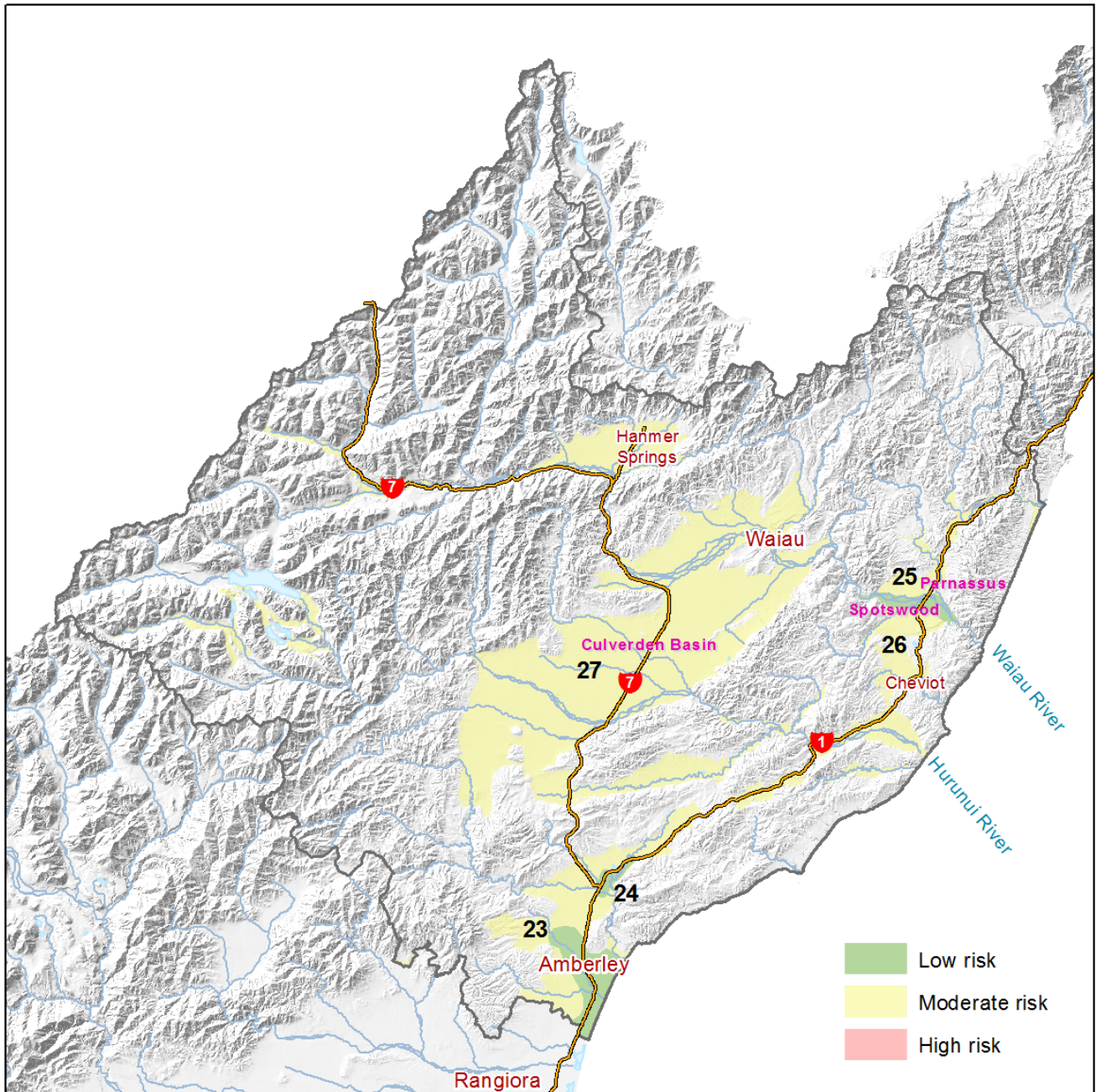


# Risk of nitrate in drinking water from private wells in the Hurunui-Waiau zone



**Low-risk** - areas where nitrate concentrations in groundwater are always below the MAV

**Moderate-risk** - areas where we do not know if nitrate concentrations will be above or below the MAV

**High-risk** - areas where nitrate concentrations in shallow groundwater are above the MAV most or all of the time

A report "Risk maps of nitrate in Canterbury groundwater" explains this map in more detail and can be found on the Environment Canterbury website ([www.ecan.govt.nz](http://www.ecan.govt.nz))

For further information on nitrate in drinking-water, health risks, how to get your wells tested and further actions you can take, please see information provided by Community and Public Health ([www.cph.co.nz](http://www.cph.co.nz))

Map last reviewed December 2017