

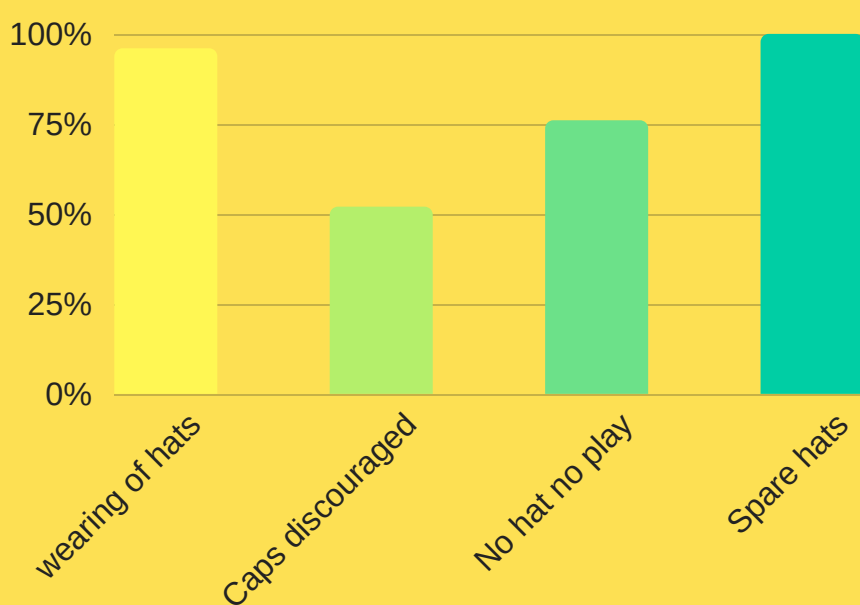
SUN PROTECTION IN EARLY CHILDHOOD EDUCATION SETTINGS

Survey Findings 2018



All ECE settings interviewed had sun protection policies in place

How ECE settings encourage sun protective hat wearing



Staff role modelling

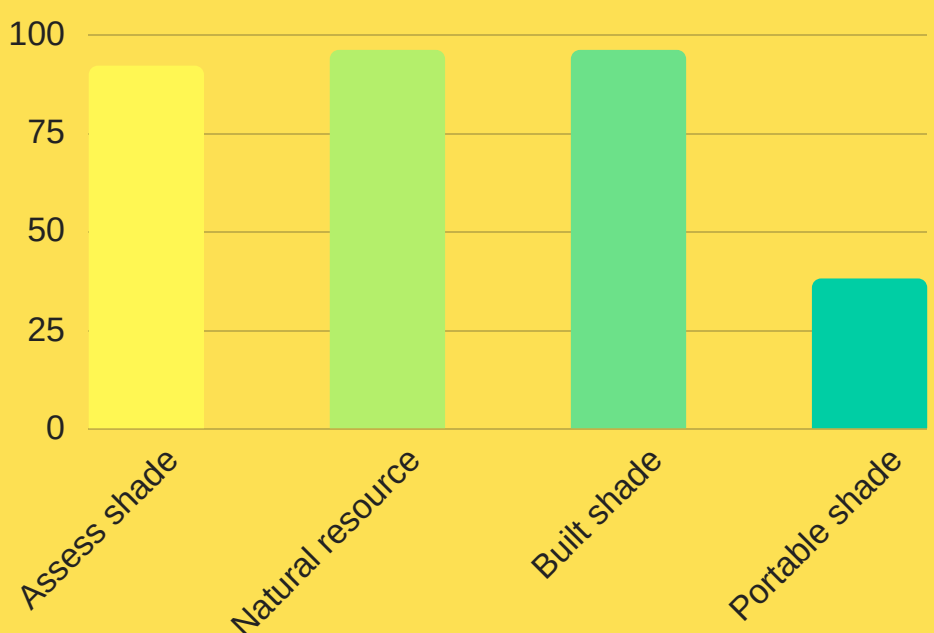
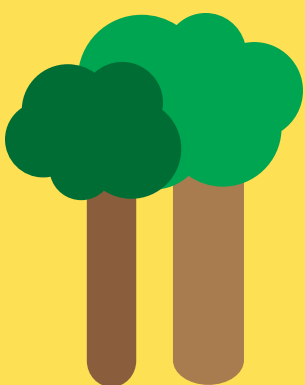
EARLY CHILDHOOD EDUCATORS TOLD US THAT STAFF ROLE MODEL SUN PROTECTIVE BEHAVIOUR WELL.



44%
52%
4%

Extremely well
Very well
Not well at all

Provision of shade outdoors

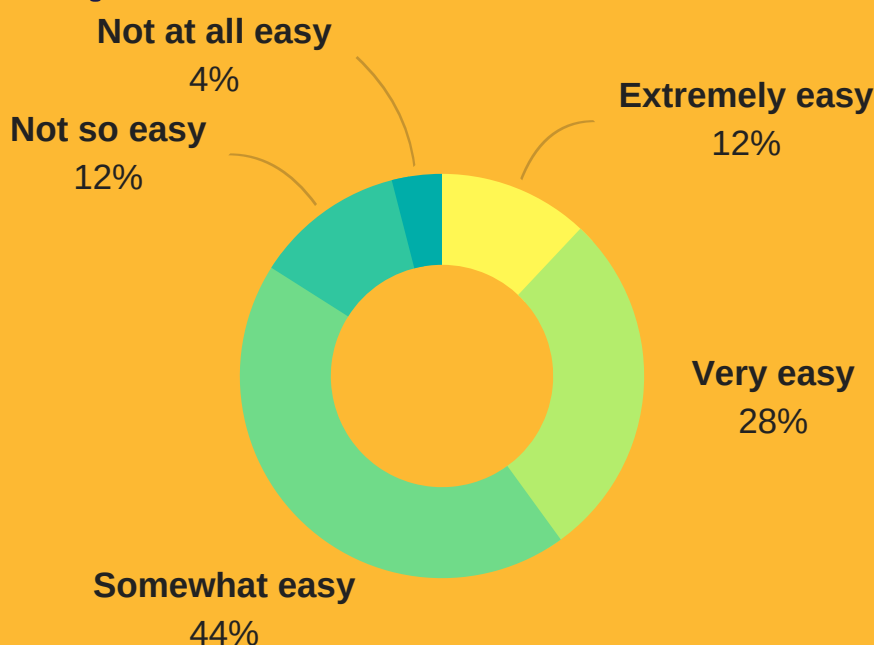


Communicating sun protection

Sun protection messages were best communicated to parents and whānau by day to day conversations.



How easy is it for ECE settings to provide a sun protective environment?



Awareness of Cancer Society online sun protection module for ECE settings

not aware 88%

aware 12%



“ Information to dispel myths would be good. Some communities don't think they can get burnt or develop skin cancer. ”

Affordability of resources like sunscreen and hats was important to educators who believed that the expense was a barrier to many families.



Kids at play

1 6 7

5 6 7

EC educators likely to benefit from strengthening practices
children likely to benefit from strengthening practices in ECE settings

26 Early childhood education settings in Christchurch were surveyed (face to face) between May and July 2018. On average each visit took 30 mins-45 mins. Most centres surveyed were equity funded.

Limitations of the survey: despite our best efforts not all ECE settings eligible to participate were able to be surveyed in the time frame scheduled.

