

Structure of Community and Public Health

Community and Public Health has offices spread across three regions of the South Island serving the public health needs of their respective communities in:

- Ashburton,
- Christchurch,
- Greymouth, and
- Timaru.

Public Health covers a diverse range of activities

Each office has staff involved in health promotion and health protection activities. Health Protection staff address many of the regulatory public health concerns, including:

- Biosecurity
- Communicable Disease
- Drinking and Recreational Water
- Emergency Preparedness
- Hazardous Substances
- Housing
- Liquor Licensing
- Resource Management Act
- Transport
- Waste Management.

Health promoters aim to help prevent chronic diseases such as cardiovascular disease, cancer and type 2 diabetes. They are linked by common biological, behavioural and environmental risk factors, which include:

- high blood pressure and cholesterol
- being overweight
- smoking
- physical inactivity
- poor nutrition and
- harmful alcohol use.

Key settings for health promotion activities include education settings (including schools and tertiary institutions), communities of high need (including Māori, Pacific and relative socio-economic deprivation), and workplaces.

Specialised support is available from the Christchurch office

The Christchurch office also has teams working in the areas of information and policy.

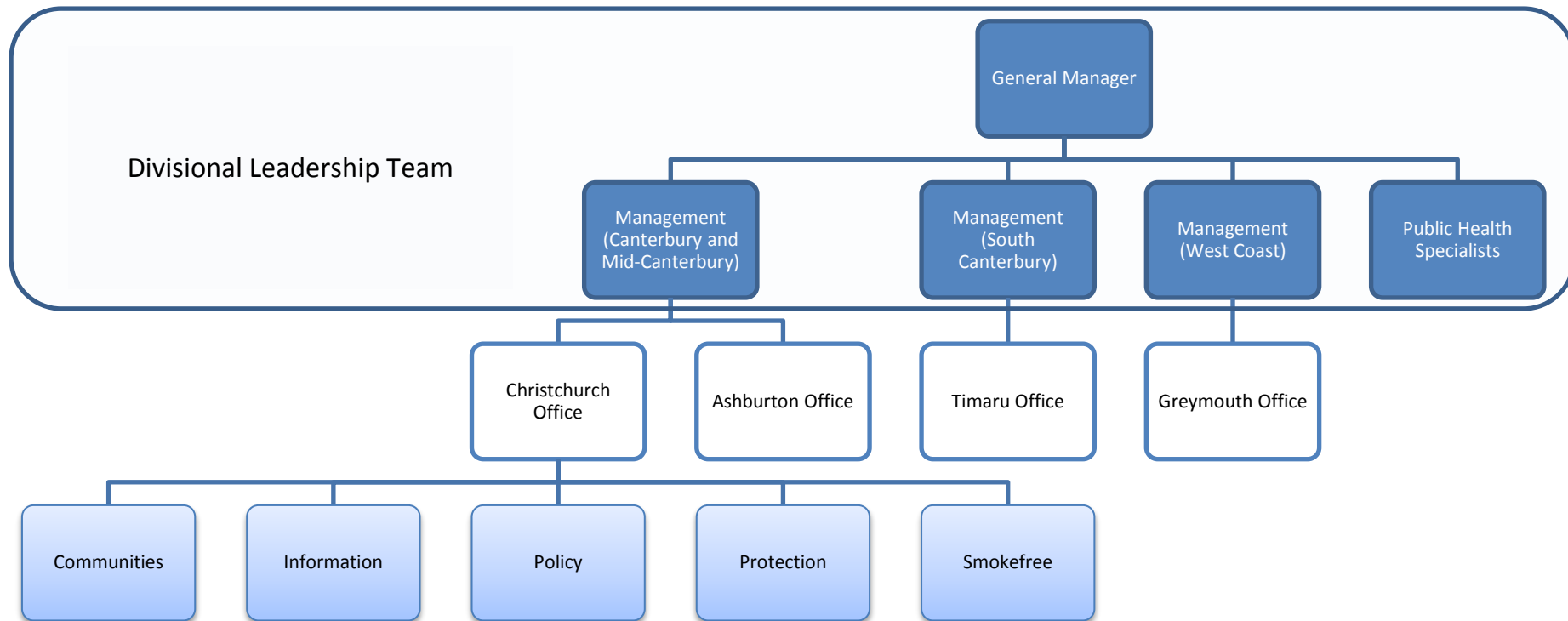
The Information Team recognises the key role of identifying and providing information about the population's health status, including what affects it, with a focus on:

- Analysis and evaluation
- Information Systems
- Quality
- Planning and Reporting
- Surveillance

The Policy Team incorporates Health in All Policies (HiAP) and health impact assessment (HIA), and has particular focus on the City Health Profile and Plan, and the Healthy Christchurch initiative.

Canterbury
District Health Board
Te Poari Hauora o Waitaha

Structure of Community and Public Health



This organisational diagram shows the structure of Community and Public Health since 1 March 2011. The upper tier of management called the Divisional Leadership Team is composed of the General Manager, Public Health Specialists (who are senior public health professionals including Medical Officers of Health) and the managers responsible for the Christchurch teams and the regional offices.

The Canterbury office in Christchurch has a largest number of staff and so is arranged into five teams. Each team covers and/or supports the core public health functions. Each team has a Team Leader and administration staff.