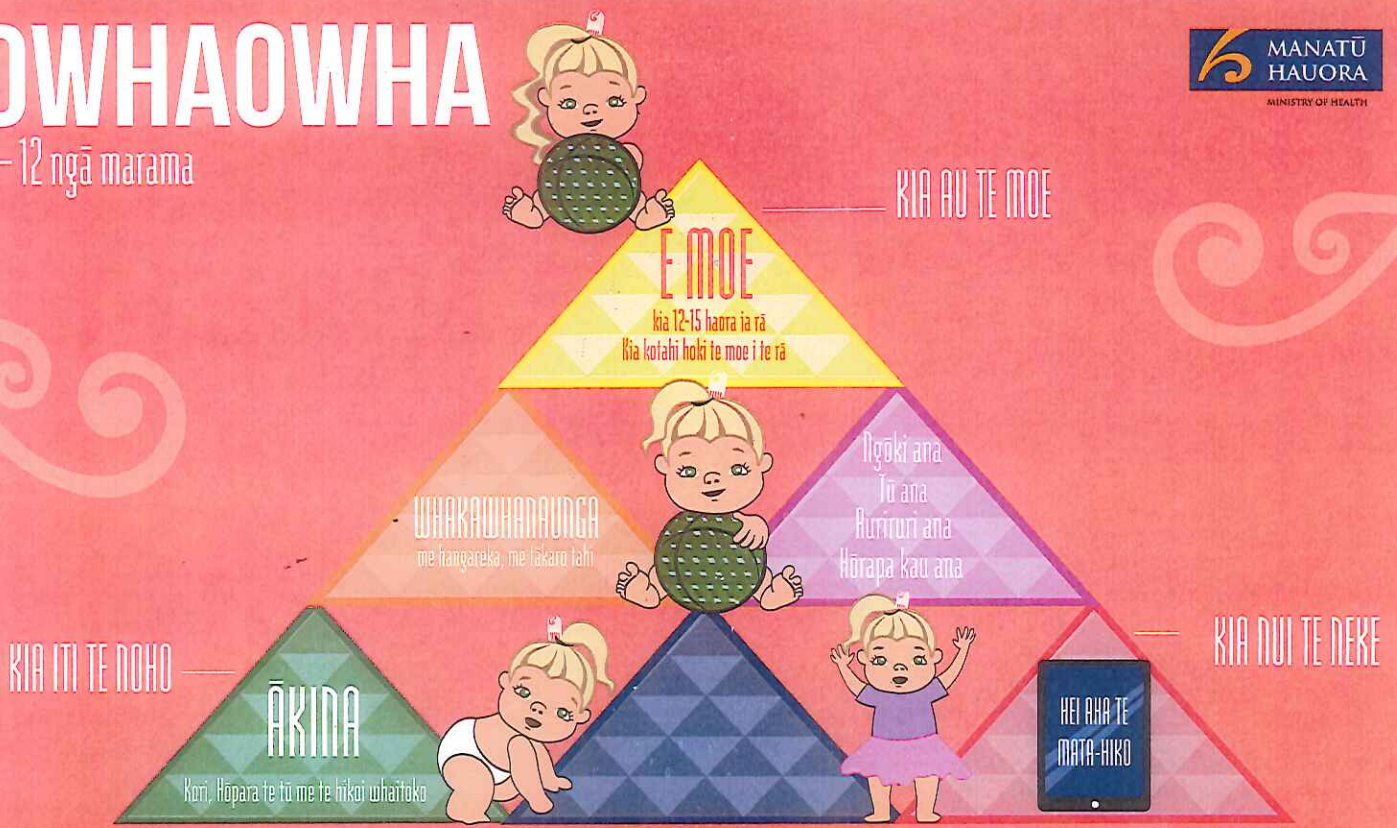


OWHAOWHA

3-12 ngā marama

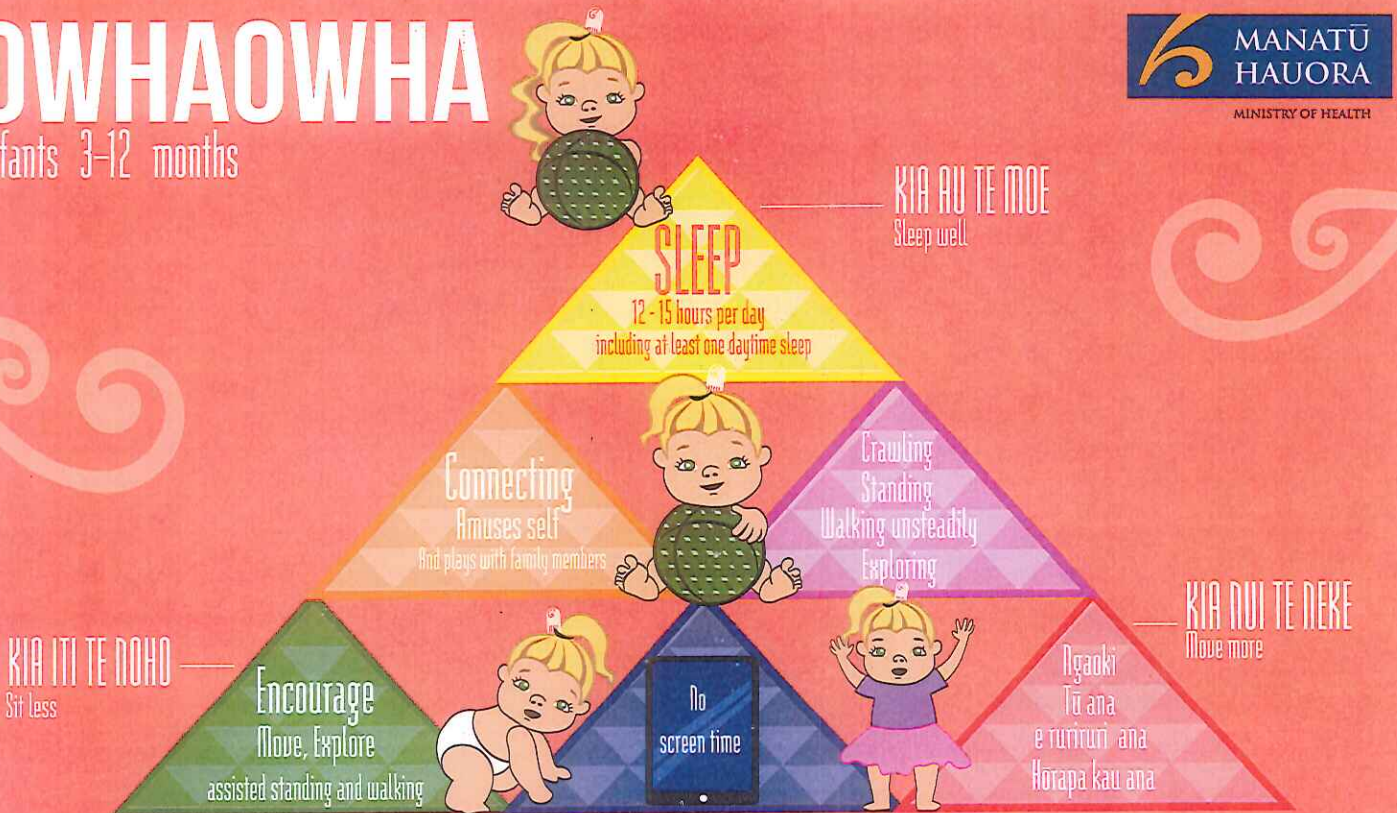


Ko te tukutuku nei he tohu mō te tangata me ōna tini āhua. Ko te 'maunga' he tohu mō te tamaīti, ko ngā 'muka' o roto he tohu mō te whakapapa, whatumanawa, tinana, wairua, wheako anō hoki o te tamaīti. Nō tātou tonu nei - nō ngā mātua, katiaki, tūpuna, whaea, pāpā anō hoki te haepapa nui ki te whatu i aua muka.

May 2018 HP 6860

OWHAOWHA

Infants 3-12 months



A child is represented by the tukutuku pattern 'maunga' or mountain. The pattern demonstrates that all people are made up of many different strands. Strands represent whakapapa (genealogy), whatumanawa (emotional), tinana (biological), wairua (spiritual), wheako (experiences), all of which (and more) represent the very tapestry of who we are. As parents, caregivers, grandparents, aunts and uncles, we have the privilege of influencing the many strands that make up a child.

December 2017 HP 6742