

# Canterbury

District Health Board

Te Poari Hauora o Waitaha

## Submission on Waimakariri District Council's Business Zone 1 and 2 Public Places Policy 2018

**To:** Waimakariri District Council  
215 High Street, Rangiora

**Submitter:** Canterbury District Health Board

Attn: Bronwyn Larsen  
Community and Public Health  
C/- Canterbury District Health Board  
PO Box 1475  
Christchurch 8140

**Proposal:** Waimakariri District Council Business Zones 1 and 2 Public  
Places Policy Consultation

## **SUBMISSION ON BUSINESS ZONES 1 AND 2 PUBLIC PLACES POLICY**

### **Details of submitter**

1. Canterbury District Health Board (CDHB).
2. The submitter is responsible for promoting the reduction of adverse environmental effects on the health of people and communities and to improve, promote and protect their health pursuant to the New Zealand Public Health and Disability Act 2000 and the Health Act 1956. These statutory obligations are the responsibility of the Ministry of Health and, in the Canterbury District, are carried out under contract by Community and Public Health under Crown funding agreements on behalf of the Canterbury District Health Board.
3. The Ministry of Health requires the submitter to reduce potential health risks by such means as submissions to ensure the public health significance of potential adverse effects are adequately considered during policy development.

### **Details of submission**

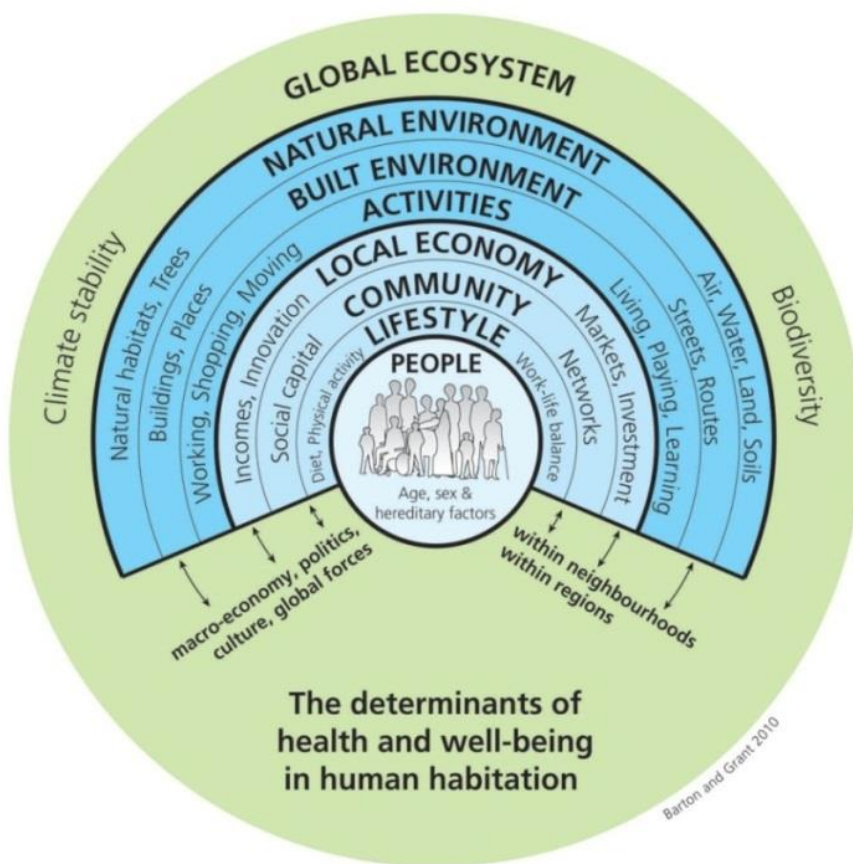
4. We welcome the opportunity to comment on the Waimakariri District Council Business Zone 1 and 2 Public Places Policy. The future health of our populations is not just reliant on hospitals, but on a responsive environment where all sectors work collaboratively.
5. While health care services are an important determinant of health, health is also influenced by a wide range of factors beyond the health sector. Health care services manage disease and trauma and are an important determinant of health outcomes. However health creation and wellbeing (overall quality of life) is influenced by a wide range of factors beyond the health sector.
6. These influences can be described as the conditions in which people are born, grow, live, work and age, and are impacted by environmental, social and behavioural factors. They are often referred to as the 'social determinants of health'<sup>1</sup>. The diagram<sup>2</sup> below shows how the various influences on health are complex and interlinked.

---

<sup>1</sup> Public Health Advisory Committee. 2004. *The Health of People and Communities. A Way Forward: Public Policy and the Economic Determinants of Health*. Public Health Advisory Committee: Wellington.

<sup>2</sup> Barton, H and Grant, M. (2006) A health map for the local human habitat. *The Journal of the Royal Society for the Promotion of Health* 126 (6), pp 252-253. <http://www.bne.uwe.ac.uk/who/healthmap/default.asp>

7. The most effective way to maximise people’s wellbeing is to take these factors into account as early as possible during decision making and strategy development. Initiatives to improve health outcomes and overall quality of life must involve organisations and groups beyond the health sector, such as local government if they are to have a reasonable impact<sup>3</sup>.



## General Comments

8. The CDHB commends the Waimakariri District Council on producing a draft policy that reflects the principles of universal design and takes into consideration the needs of pedestrians of all ages and abilities in designing public spaces within business zones.
9. The CDHB commends the Waimakariri District Council for acknowledging the importance of creating smokefree public spaces, and including references to the current Council Smokefree Greenspaces Policy 2012 and national Smokefree 2025 goal.

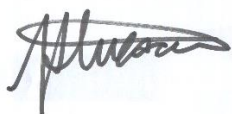
## Specific comments

10. The CDHB recommends under *Schedule C Smokefree Policy and Guidance, Item 2 Smokefree Outdoor Dining* that reference and a link be included to the successful Fresh Air Project website ([www.freshairproject.org.nz](http://www.freshairproject.org.nz)) as a resource that includes all of the relevant information to support businesses introducing smokefree outdoor dining.

## Conclusion

11. Thank you for the opportunity to submit on the Business Zone 1 and 2 Public Places Policy.

## Person making the submission



Dr Anna Stevenson Date: 30/07/2018  
Public Health Physician

## Contact details

Bronwyn Larsen  
For and on behalf of  
Community and Public Health  
C/- Canterbury District Health Board  
PO Box 1475  
Christchurch 8140

P +64 3 364 1777

F +64 3 379 6488

Bronwyn.larsen@cdhb.health.nz