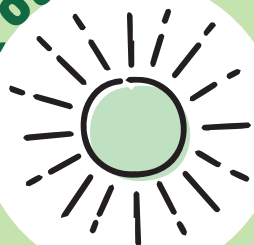


KEEPING YOURSELF SAFE FROM LEGIONNAIRES' DISEASE

- Legionella bacteria can be commonly found in bulk loads and bags of compost, potting mix and soil and can cause Legionnaires' disease.
- Legionnaires' disease is a flu-like illness that can develop into severe pneumonia and could be fatal.

Here are 6 steps you can follow when working with bulk loads or bags of compost and potting mix

Work outside



Always work outdoors when using compost or potting mix. A fine day with light wind is best.

Mask up



Put on a well-fitting face mask with clean hands. An N95 or respirator is best.

Wear gloves



Wear gloves when handling compost and potting mix.

Cut (don't rip)



Open bags of compost and potting mix carefully using scissors and open them away from your face.

Damp it down



Wet the compost or potting mix before handling to reduce dust.

Wash your hands



Wash your hands thoroughly with soap and water after the work is done.

For more information visit: info.health.nz/conditions-treatments/lungs/legionnaires-disease-legionellosis

Health New Zealand
Te Whatu Ora