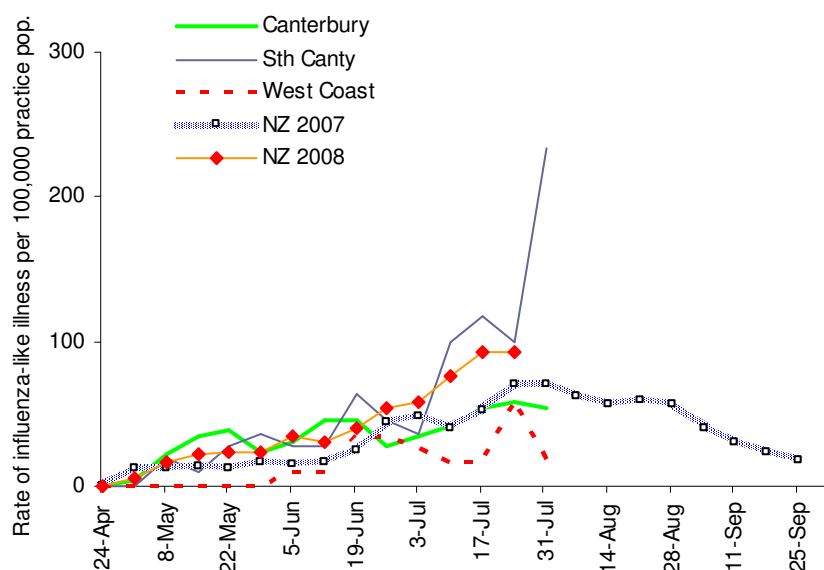


### C&PH Influenza Surveillance 2008

Summary graph of influenza-like illness surveillance by 9/9 Canterbury, 3/3 South Canterbury and 2/2 West Coast medical centres for the week ending Thursday 31 July 2008.



These results should be interpreted with caution because of the relatively small ratio of sentinel practice populations to health district populations

#### Thresholds Used To Describe Influenza-Like Activity

	Rate per 100,000 practice population
Baseline	≤49
Normal seasonal activity	
low	50–99
moderate	100–149
high	150–249
Higher than expected	250–399
Severe epidemic	>400

Peter Mitchell  
Surveillance Co-ordinator