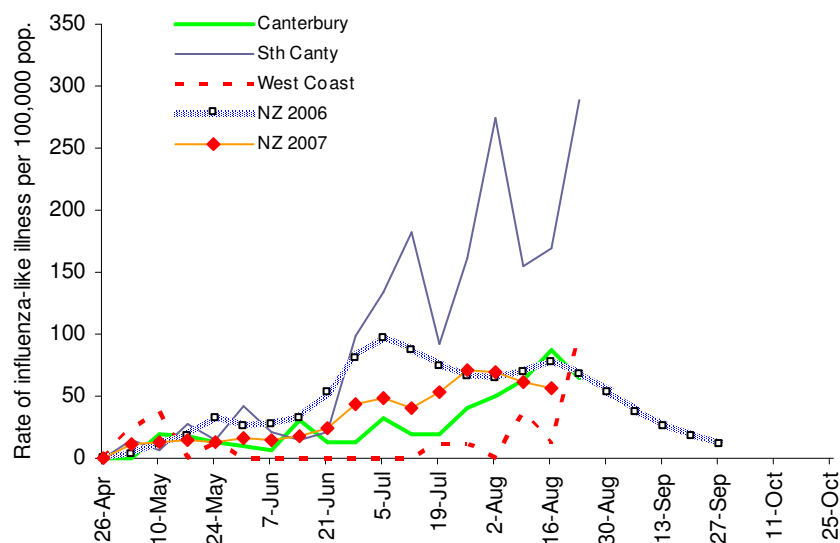


C&PH Influenza Surveillance 2007

Summary graph of surveillance by 8/9 Canterbury, 4/4 South Canterbury and 2/2 West Coast medical centres for the week ending 23 August 2007.



These results should be interpreted with caution because extrapolations are made from a relatively small number of sentinel practices to health district populations

Thresholds Used To Describe Influenza-Like Activity

	Rate per 100,000 practice population
Baseline	≤49
Normal seasonal activity	
low	50-99
moderate	100-149
high	150-249
Higher than expected	250-399
Severe epidemic	>400

Peter Mitchell
Medical Officer
Communicable Diseases Team