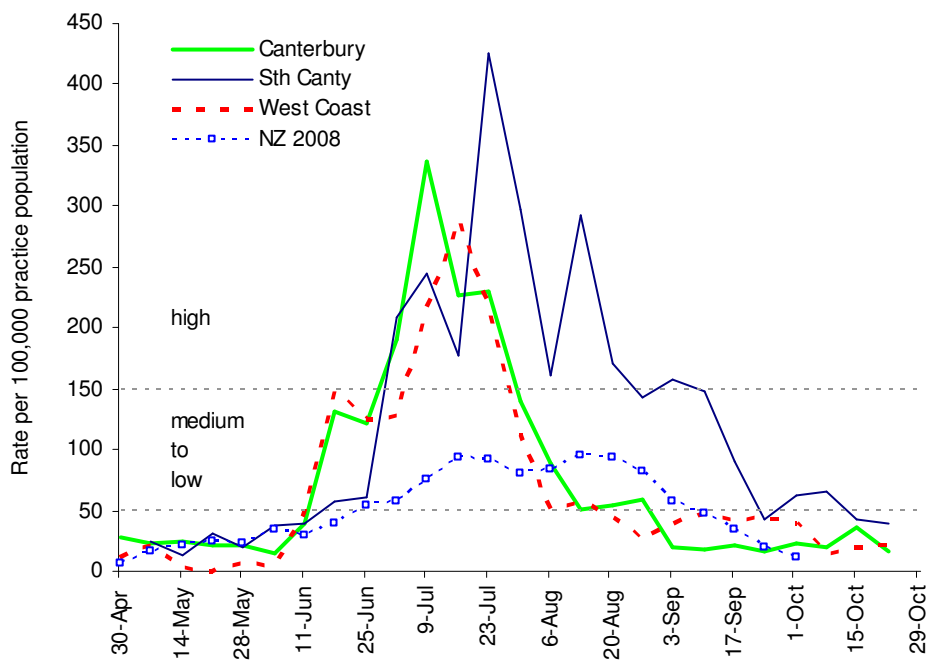


Rates Of Influenza-like Illness By Sentinel Practice Surveillance In the C&PH DHBs 2009

Summary graph of influenza-like illness surveillance by 20/23 Canterbury, (including 1/1 Ashburton), 9/9 South Canterbury and 7/8 West Coast sentinel medical centres for the week ending Thursday 22 October 2009, and for New Zealand 2008.



Peter Mitchell
Medical Officer
For Medical Officer of Health