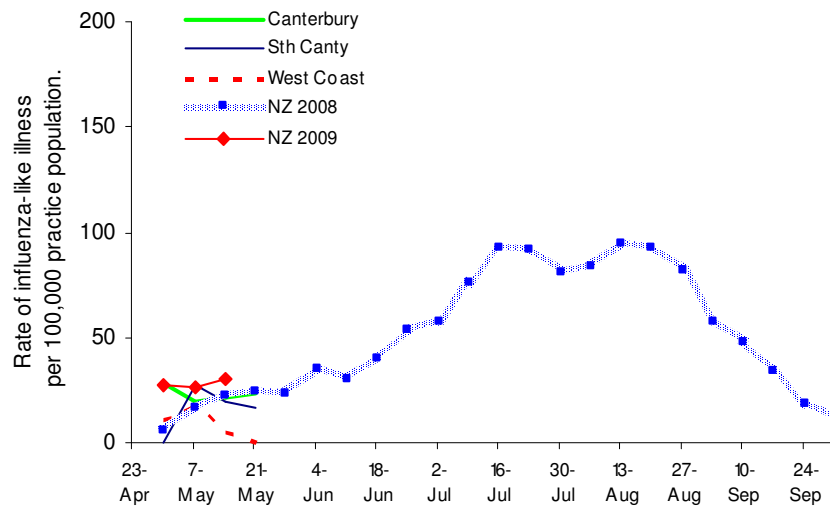


### C&PH Influenza Surveillance 2009

Summary graph of influenza-like illness surveillance by 21/24 Canterbury, 7/10 South Canterbury and 5/5 West Coast sentinel medical centres for the week ending Thursday 21 May 2009, and for New Zealand 2008 and 2009.



#### Thresholds Used To Describe Influenza-Like Activity

	Weekly rate per 10 <sup>5</sup> practice population
Baseline	≤49
Normal seasonal activity	
low	50–99
moderate	100–149
high	150–249
Higher than expected	250–399
Severe epidemic	>400

Peter Mitchell  
Medical Officer  
For Medical Officer of Health