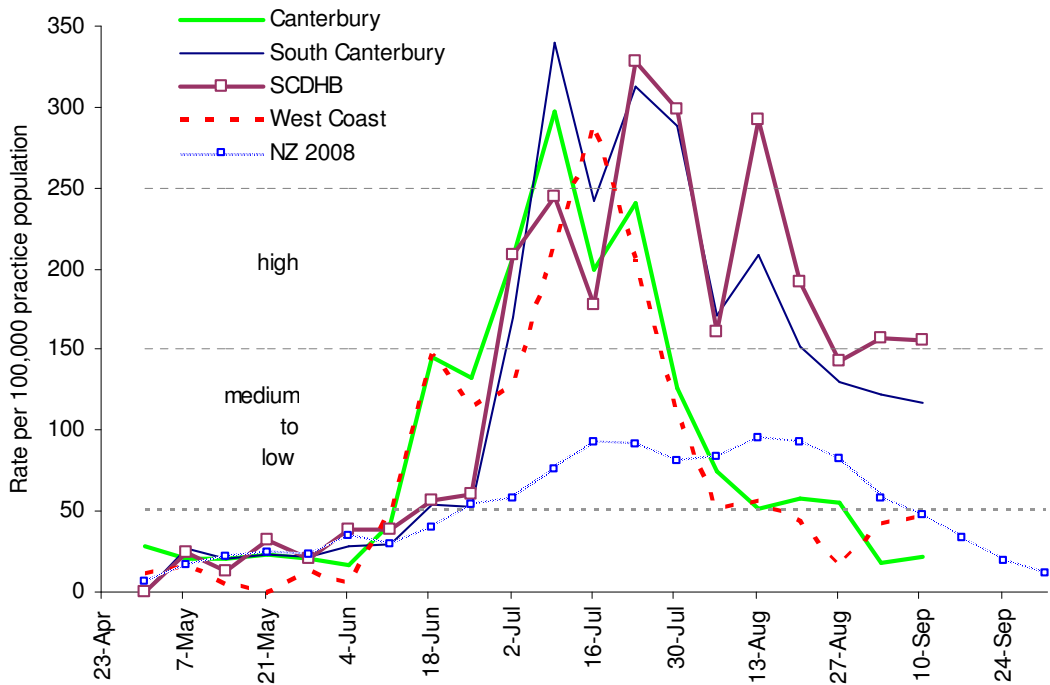


**C&PH Influenza Surveillance In Regional Health Districts*
and the SCDHB – 2009**

Summary graph of influenza-like illness surveillance by 17/23 Canterbury, 1/1 Ashburton, 8/9 South Canterbury and 8/8 West Coast sentinel medical centres for the week ending Thursday 10 September 2009, and for New Zealand 2008.



* South Canterbury Health District includes Ashburton but South Canterbury DHB doesn't.

Peter Mitchell
Medical Officer
For Medical Officer of Health